

Roots of Injustice: The Structural Sources of America's Penal State

March 5, 2021, 9:00-5:00pm - Online Continuing Education via Zoom Videoconference

INSTRUCTIONS AND LOGISTICS

WELCOME

We look forward to you joining the [Seattle University Department of Criminal Justice Crime & Justice Research Center](#) for our annual continuing education event - ***Roots of Injustice: The Structural Sources of America's Penal State***. The event features the work of Dr. David Garland, widely considered one of the world's leading sociologists of crime and punishment. Dr. Garland is the Arthur T. Vanderbilt Professor of Law at the School of Law and Professor of Sociology in NYU's Department of Sociology. The event will include panels featuring Dr. Garland's books – *Punishment and Welfare: A History of Penal Strategies* (1985), *Mass Imprisonment: Social Causes and Consequences* (2001); *Punishment and Modern Society: A Study in Social Theory* (1993), *America's Death Penalty: Between Past and Present* (2011); *Peculiar Institution: America's Death Penalty in an Age of Abolition* (2012), *The Culture of Control: Crime and Social Order in Contemporary Society* (2001), *The Welfare State: A Very Short Introduction* (2016), and his article, "On the Concept of Moral Panic" in *Crime, Media, and Culture* (2008). The panels will be facilitated by Seattle University Master of Arts in Criminal Justice alumni who currently work as criminology and criminal justice academics, researchers, and practitioners who will pose questions to Dr. Garland on topics around current criminal justice events related to his books and publications.

INSTRUCTIONS FOR JOINING THE CONTINUING EDUCATION VIDEOCONFERENCE

As a registered participant, you will receive a Zoom calendar invitation with a link to join the event. At the time of the event, click the link in the calendar invite. Participants' video and audio will be muted during the event, but chat will be enabled. You will have the opportunity to ask questions via chat. The event will be moderated by Seattle University Department of Criminal Justice faculty and staff—Dr. Jacqueline Helfgott, Director of the Crime & Justice Research Center, Dr. Elaine Gunnison, Graduate Program Director, Dr. Matt Hickman, Seattle University Criminal Justice Department Chair, Jonathan Bechtol, Administrative Assistant, and Nicole Moses, Graduate Program Coordinator. Panels will be facilitated by alumni of the Seattle University Department of Criminal Justice Master of Arts in Criminal Justice program. Panel Facilitators and Moderators will select questions based on a first come, first served basis and will invite those who ask questions to unmute audio/video to ask a question. Questions will be posed to panelists as time allows at the end of their panel and at the discussion at the end of the day. Parts of the event will be recorded.

INSTRUCTIONS FOR USING ZOOM DURING THE CONTINUING EDUCATION VIDEOCONFERENCE

Once you enter the videoconference, you will have the ability to control how you view the meeting. You will have the choice of displaying all screens simultaneously in *Gallery View* or just the person who is speaking in *Speaker View*.

DURING THE MEETING

The event is an all-day continuing education event for 8-hour continuing education credit. If you are not interested in receiving a continuing education credit/certificate, you are welcome to join and leave the event to hear specific speakers throughout the day by disconnecting and rejoining via the original link in the calendar invitation. For those participating in the all-day event, during the lunch and afternoon breaks or other times you need to leave the event, you can simply make sure your audio and video is muted, leave the meeting running, and step away when you need to. If you participate in the full all-day event and are interested in obtaining a certificate of completion for the event for 8-hours of continuing education credit, please contact Jonathan Bechtol, Seattle University Department of Criminal Justice Administrative Assistant at bechtolj@seattleu.edu or (206) 296-6339

Seattle University Crime & Justice Research Center – *Roots of Injustice: The Structural Sources of America's Penal State*, March 5, 2021 9:00-5:00pm



Roots of Injustice: The Structural Sources of America's Penal State

May 5, 2021, 9:00-5:00pm - [Online Continuing Education via Zoom Videoconference](#)

PROGRAM AGENDA

9:00-9:30: WELCOME AND INTRODUCTIONS

- Dr. Jacqueline Helfgott, Professor/Director, Seattle University Crime & Justice Research Center
- Dr. Elaine Gunnison, Professor/Graduate Program Director, Seattle University Department of Criminal Justice
- Featured Speaker and Panel Facilitator Introductions

9:30-10:30: PANEL #1 – *Punishment and Welfare: A History of Penal Strategies (1985), Mass Imprisonment: Social Causes and Consequences (2001); Punishment and Modern Society: A Study in Social Theory (1993)*

Facilitators: Dr. Beck Strah; Lauren Morgan, Nancy Garcia

10:30-11:30: PANEL #2 – *On the Concept of Moral Panic in Crime, Media, and Culture (2008)*

Facilitators: Emily Dorscher, Bradley Loetzke

11:30-12:30: LUNCH BREAK

12:30– 1:30: PANEL #3 – *America's Death Penalty: Between Past and Present (2011); Peculiar Institution: America's Death Penalty in an Age of Abolition (2012)*

Facilitators: Jennifer Danner, Susan Nembhard

1:30-2:30: PANEL #4 – *The Culture of Control: Crime and Social Order in Contemporary Society (2001), The Welfare State: A Very Short Introduction (2016)*

Facilitators: Loren Atherley, Tonya Cole, Andrea Giuffre

2:30-2:45: BREAK

2:45-3:45: Feature Presentation and Discussion: Dr. David Garland - *The Roots of Injustice: The Structural Sources of America's Penal State*

3:45-4:45: Discussion and Q&A

Facilitators: Teneshia Thurman, Kidst Messelu

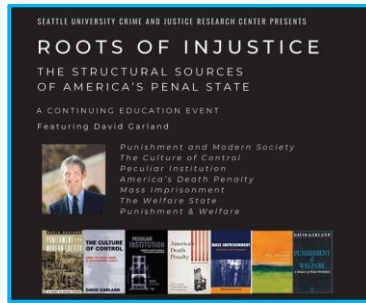
4:45-5:00: WRAP-UP AND THANK YOU!

- Dr. Jacqueline Helfgott, Professor/Director, Seattle University Crime & Justice Research Center
- Dr. Matthew Hickman, Professor/Chair, Seattle University Department of Criminal Justice

Seattle University Crime & Justice Research Center – *Roots of Injustice: The Structural Sources of America's Penal State*, March 5, 2021 9:00-5:00pm



DEPARTMENT OF CRIMINAL JUSTICE



Roots of Injustice: The Structural Sources of America's Penal State

March 5, 2021, 9:00-5:00pm - Online Continuing Education via Zoom Videoconference

PARTICIPANT BIOS

KEYNOTE SPEAKER



Dr. David Garland David Garland, widely considered one of the world's leading sociologists of crime and punishment, is the Arthur T. Vanderbilt Professor of Law in the School of Law and also Professor of Sociology in NYU's Department of Sociology. Garland is the author of a series of award-winning books, including *Punishment and Welfare: A History of Penal Strategies* (1st edition, 1985; new edition 2018); *Punishment and Modern Society: A Study in Social Theory* (1990); *The Culture of Control: Crime and Social Order in Contemporary Society* (2001); and *Peculiar Institution: America's Death Penalty in an Age of Abolition* (2010). He has been elected to membership of learned societies in both the US and the UK, being a Fellow of the British Academy, the American Academy of Arts and Sciences, and the Royal Society of Edinburgh. Garland has been a Davis Fellow at Princeton University's History Department (1984-85), a J. S. Guggenheim Fellow (2006-07) and a Fellow of the Stanford Center for Advanced Study (TBA). He has been awarded doctorates honoris causa by the Free University of Brussels (2009) and Oslo University (2017). In 2012, the American Society of Criminology awarded him the Edwin H.

Sutherland Prize for outstanding contributions to theory and research. In the fall of 2014, he was Shimizu Visiting Professor at the London School of Economics and from 2013 to 2016, a Professorial Fellow at Edinburgh University Law School. His current work focuses on comparative explanations of America's distinctive use of punishment and on the genealogy of the idea of the 'welfare state.' His most recent book, *The Welfare State: A Very Short Introduction* (OUP) was published in the spring of 2016.

PANEL FACILITATORS



Loren Atherley, MACJ 2010

Loren T. Atherley serves as Director of Performance Analytics & Research (PA&R) and the Senior Research Scientist for the Seattle Police Department (SPD). The PA&R Section is a continuation of the department's internal performance, evaluation and advanced research methods capabilities, developed to demonstrate compliance with a federal Consent Decree. Loren leads a regional research consortium, a national data working group on Analytics & Evidence Based Policing (affiliated with the Major Cities Chiefs Association) and an international research network. In addition, Loren consults across the criminal justice and data sciences including statistics and research methods, threat assessment / threat management and violent / aggressive / psychopathic behavior, providing strategic advice to the Chief of Police and the City of Seattle, as well as other local, state and federal agencies. Loren is an Adjunct

Professor of Criminal Justice at Seattle University. Loren holds a Master's degree in Criminal Justice from Seattle University, where he completed a thesis on behavioral profiling and serial sexual homicide, the Green River Killer and the offender Gary L. Ridgway. Loren is a 2020 National Institute of Justice Law Enforcement for Advancing Data and Science (LEADS) Scholar.



Roots of Injustice: The Structural Sources of America's Penal State

May 5, 2021, 9:00-5:00pm - [Online Continuing Education via Zoom Videoconference](#)



Tonya Cole, MACJ 2015

Tonya Cole is a Felony Victim Advocate with the King County Prosecuting Attorney's Office. She has been a domestic violence victim advocate for nearly 15 years. She has worked for a batterer's intervention program, a domestic violence emergency shelter, and with the US Army. Tonya has a BS in Psychology from George Fox University (2006) and graduated from Seattle University in 2015 with a MA in Criminal Justice with a victimology concentration. During that time, she volunteered with Seattle Restorative Justice where she created the victimology portion of the facilitator's training. Tonya blended her passions for restorative justice and working with domestic violence victims in her thesis, "How Restorative Justice is Applied to Domestic Violence in the United States: An Evaluability Assessment." She has also volunteered with Kairos Prison Ministry International and served on the Advisory Council.



Jennifer Danner, MACJ 2016

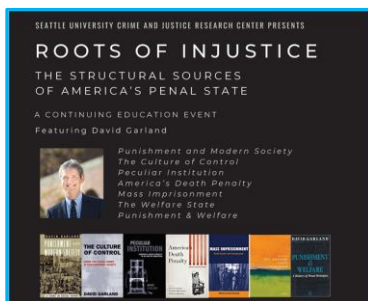
Jennifer Danner graduated from Seattle University with her Master's degree in Criminal Justice in 2016. While pursuing her MACJ, she worked as a Research Analyst for the Seattle Police Department, under the direction of Dr. Jackie Helfgott, working on the Micro-Community Policing Plans Project. Upon graduation, Jennifer was offered a full-time position with the Seattle Police Department as the SW Precinct Crime Prevention Coordinator. As Crime Prevention Coordinator, Jennifer works with Seattle community members to reduce crime victimization by offering safety/security assessments, assistance with Block Watch groups, and by presenting at community events and meetings. She also runs a few community outreach programs, including the [Women's Personal Safety Program](#), and Paws on Patrol. Jennifer has received numerous certifications while at SPD, and also serves as the secretary for the

Washington State Crime Prevention Association.



Emily Dorscher, MACJ 2017

Emily Dorscher is a Crime Analyst with the Everett, Washington Police Department. Emily graduated from Seattle University with a master's degree in Criminal Justice in 2017. During her time at SU, Emily worked as a Research Analyst with the Washington State Criminal Justice Training Commission (CJTC), collecting data for longitudinal research on police culture and Crisis Intervention Team Training for police recruits. Following graduation, Emily expanded her research analyst position with the Commission to include an overall evaluation of the Basic Law Enforcement Academy. In 2019, Emily was offered a position with the Everett Police Department as a Police Crime Analyst. In this position, Emily works directly with police administration to interpret police data investigators to determine crime patterns, and local departments to share intelligence on criminal operations in the area. She is also a member of the Washington State Organized Retail Crime Alliance (WSORCA), Northwest Regional Crime Analyst Network (NORCAN) and International Association of Crime Analysts (IACA). Emily is currently planning to pursue a Doctorate in Sociology with an emphasis in Criminal Justice.



Roots of Injustice: The Structural Sources of America's Penal State

March 5, 2021, 9:00-5:00pm - Online Continuing Education via Zoom Videoconference



Nancy Garcia, MACJ 2012

Nancy Garcia is a Programs Manager and Inmate Welfare Fund Manager for the adult divisions with King County Adult and Juvenile Detention. Nancy Garcia received her Bachelor of Arts in Criminal Justice from Xavier University in Cincinnati Ohio in 2005, her Master of Arts in Criminal Justice from Seattle University in 2012, and her Juris Doctor from Seattle University School of Law in 2020. While attending school Nancy worked in the field with various populations to include, youth, sex offenders, undocumented individuals, veterans, and homeless communities all of which were experiencing challenges with the justice system. Her role consists of collaborating with partner agencies to introduce and maintain in custody programming that engages the population in reentry planning activities that may prevent reincarceration.



Andrea Giuffre, MACJ 2018

Andrea Giuffre is a doctoral student at the University of Missouri – St. Louis. Her primary research interests include the impact of identity formation on desistance, the collateral consequences of justice system contact, and corrections. Giuffre currently works as a research assistant for Dr. Beth Huebner on a study entitled, “Understanding the Characteristics of Individuals Admitted to Jails and Their Lengths of Stay: A Multi-Site Analysis” sponsored by the Pew Charitable Trusts. Previously, Giuffre worked for Dr. Beth Huebner as a research assistant on the, “Multi-State Study of Monetary Sanctions” sponsored by Arnold Ventures.



Bradley Loetzke, MACJ, 2019

Bradley Loetzke is a Special Education Specialist at Treehouse, a non-profit organization supporting foster kids. MA Bradley Loetzke is a former Tacoma Public Schools student, who graduated from Foss High School in 2004. After Foss, Bradley attended Tacoma Community College receiving an Associate's Degree in Arts and Science. From TCC Bradley transferred to The Evergreen State College where he received a Bachelor's in Art with a Law emphasis, while working with the Upward Bound program helping first generation and low income high school students achieve their dreams of college. After The Evergreen State College he went on to Seattle University to obtain a Master's Degree in Criminal Justice from Seattle University graduating in 2019. Since then MA Bradley Loetzke has gone onto becoming a

manager for The Treehouse Organizations, Graduation success program. He now leads a team of educational specialist that work hands on with foster-care youth helping provide an equitable high school experience, to their peers who do not experience foster-care throughout six different school districts. Bradley has devoted his professional life to helping youth achieve their goals and creating opportunities in efforts to prevent youth from going to juvenile detention or jail.



Roots of Injustice: The Structural Sources of America's Penal State

May 5, 2021, 9:00-5:00pm - [Online Continuing Education via Zoom Videoconference](#)



Teneshia Thurman, MACJ 2012

Teneshia Thurman is a doctoral student in the Criminology, Law and Society program at George Mason University. She currently works as a research assistant at the Center for Advancing Correctional Excellence (ACE!) with Dr. Faye Taxman and Dr. Danielle Rudes. Teneshia received her B.A in Sociology and Criminology from The Ohio State University with a minor in African American studies. She received her M.A. in Criminal Justice from Seattle University. While working at ACE! Teneshia has worked on a RCT that focused on motivational interviewing, substance abuse, and motivation for substance abuse treatment within a criminal justice population. Also, her work at ACE! included developing an implementation science toolkit for both state and federal agencies. Currently, her main projects center on providing research inspired technical support and translation of data and quality improvement models to multiple agencies, improving the quality of supervision and treatment delivered to justice involved individuals.



Kidst Messelu, MACJ 2020

Kidst Messelu is a Bureau of Diplomatic Security Special Agent with the U.S. Department of State. During her time at Seattle University Kidst earned dual Bachelor of Arts in Psychology and Criminal Justice with a specialization in Forensic Psychology, and most recently her Master of Arts in Criminal Justice with a specialization in investigative criminology. Kidst has 16 years of military service in Army Aviation as a Chinook Helicopter Flight Engineer, she has deployed in support of Operations Noble Eagle, Iraqi Freedom, Enduring Freedom, and Spartan Shield, culminating in three tours in Iraq and one tour in Afghanistan.



Lauren Morgan, MACJ 2018

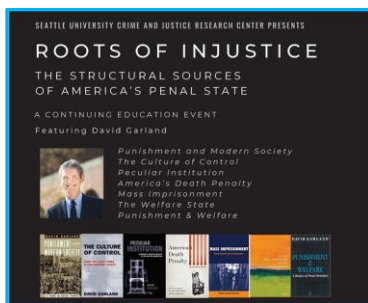
Lauren is a PhD student in the Department of Criminology and Criminal Justice at University of Missouri Saint Louis. Her research interests include the intersection of juvenile justice and foster care systems, child welfare and juvenile justice policy, organizations and criminal justice, and crossover youth. Her research examines the organizational properties of the juvenile justice and foster care systems in St. Louis and their impacts on crossover youth. Lauren is also involved in projects that explore the mechanisms underlying criminal justice reform and the effects of criminal justice policies on crime. She is currently working on the MacArthur research grant with advisor Beth Huebner to evaluate how the defense counsel at the first appearance pilot program impacts indigent defendants in the St. Louis community.

Additionally, she is interning with the Missouri State Public Defender's- Children's Defense Team to evaluate client satisfaction among St. Louis area youth.



Susan Nembhard, MACJ, 2018

Susan Nembhard is a research analyst in the Justice Policy Center at the Urban Institute in WA D.C. Her work focuses on quantitative and qualitative research methods with a focus on victimization, community supervision policy, the link between education and criminality, and criminal case processing. Prior to her work at the Urban Institute, she was a police misconduct investigator in Washington D.C. at the Office of Police Complaints.



Roots of Injustice: The Structural Sources of America's Penal State

March 5, 2021, 9:00-5:00pm - Online Continuing Education via Zoom Videoconference



Dr. Beck Strah MACJ, 2010

Beck Strah is an Assistant Professor of Criminology and Criminal Justice in the School of Justice Studies at Roger Williams University in Rhode Island. He has a PhD in Criminology and Criminal Justice from Northeastern University and specializes in research on corrections, gender and crime, program evaluation, and sex offending. His research interests are in the areas of prison culture, gender and crime, program evaluations, sexual offending populations and criminal justice policy, and the effects of punishment. His dissertation research examined the causal effects of hypermasculinity on behavior in prison environments and he has been involved in developing and teaching inmate programming services Norfolk County Correctional Center. Dr. Strah has worked collaboratively on publications and reports for state and local agencies. Recently, his research has evaluated cultural and curricular changes implemented at the Washington State Criminal Justice Training Center and he was co-investigator on a collaborative study evaluating the attitudes and experiences of registered sex offenders in Washington State. Dr. Strah's work has appeared in the *Journal of Offender Rehabilitation*, *Journal of Qualitative Criminal Justice and Criminology*, and *Journal of Police and Criminal Psychology*. Prior to his doctoral work, Beck was employed as a Corrections Deputy in Snohomish County, Washington. Outside of his research, Beck is currently co-authoring a textbook titled *Criminal Psychology: History, Practice, Research, and the Future*.

EVENT MODERATORS



Dr. Jacqueline Helfgott, Professor & Director of Seattle University's Criminal Justice Crime and Research Center

Dr. Helfgott has a PhD and MA in Administration of Justice from Pennsylvania State University and BA from the University of Washington in Psychology and Society & Justice. Her research interests include criminal behavior, psychopathy, copycat crime, corrections/reentry, policing and public safety, and crisis intervention in law enforcement. She is author of *No Remorse: Psychopathy and Criminal Justice* (Praeger, 2019), *Criminal Behavior: Theories, Typologies, and Criminal Justice* (Sage, 2008), Editor of *Criminal Psychology, Volumes 1-4* (Praeger, 2013), coauthor of *Offender Reentry: Beyond Crime and Punishment* (Lynne Rienner Publishers, 2013) and *Women Leading Justice: Experiences and Insights* (Routledge, 2019). She is currently working on the book *Copycat Crime: How Media, Technology, and Digital Culture Inspire Criminal Behavior and Violence* (Praeger). Her work has been published in peer-reviewed journals including: *Aggression and Violent Behavior*, *Criminal Justice & Behavior*, *Forensic Psychology Practice*, *Journal of Police and Criminal Psychology*, *International Journal of Law and Psychiatry*, *Journal of Prison Education and Reentry*, *Journal of Community Corrections*, *Federal Probation*, *Corrections Policy, Practice and Research*, *Women and Criminal Justice*, the *International Review of Victimology* and the *International Journal of Offender Therapy and Comparative Criminology*. She has served as principal investigator on grant-funded research and service in policing, courts, corrections, and victim services including longitudinal evaluation of the Washington State Criminal Justice Training Commission's Guardian-Oriented Law Enforcement Training, the Research Network on Misdemeanor Justice, and evaluation of the Seattle Women's Reentry initiative. She is currently principal investigator on the Seattle Police Department's Micro-Community Policing Plan and Pilot Evaluation of the South King County Pretrial Services and Linkages Services Pilot Program. She is a member of the *American Society of Criminology*, the *Western Society of Criminology*, the *American Association of Threat Assessment Professionals*, and the *Society for the Scientific Study of Psychopathy*. She currently serves as co-editor (with E. Gunnison) for the *Journal of Criminology, Criminal Justice, Law & Society*.

Seattle University Crime & Justice Research Center – *Roots of Injustice: The Structural Sources of America's Penal State*, March 5, 2021 9:00-5:00pm



Roots of Injustice: The Structural Sources of America's Penal State

May 5, 2021, 9:00-5:00pm - [Online Continuing Education via Zoom Videoconference](#)



Dr. Elaine Gunnison, Professor & Graduate Director of the Department of Criminal Justice at Seattle University

Dr. Gunnison received her Ph.D. in Criminal Justice from the University of Cincinnati in 2001 with a specialization in life course criminology, female offending, and corrections. Her research interests include understanding female offending patterns such as desistance and persistence, the applicability of criminological theory to females, understanding community corrections officers, and ex-offender reentry. She has also recently been examining criminal justice researchers' experiences with IRBs. Her research has been published in *Crime and Delinquency*, *Criminal Justice Studies: A Critical Journal of Crime, Law, and Society*, *Federal Probation*, *The Journal of Criminal Justice*, *The Journal of Community Corrections*, *The Journal of International and Comparative Criminal Justice*, *The Journal of Crime and*

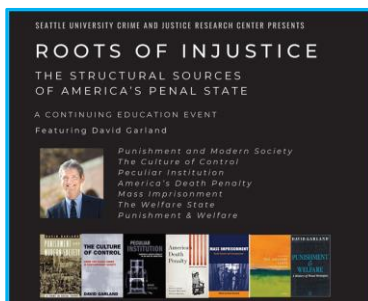
Justice, *Women and Criminal Justice*, *Corrections: Policy, Practice, and Research*, *The Journal of Qualitative Criminal Justice & Criminology*, *The Journal of Prison Education and Reentry*, *The Journal of Police and Criminal Psychology*, *The Journal of Interpersonal Violence*, *The Western Criminology Review*, *Criminology*, *Criminal Justice, Law & Society*, *Academic Exchange Quarterly*, *the Qualitative Report*, *the Encyclopedia of Community Corrections*, *the Encyclopedia of Gender and Society*, *the Encyclopedia of Criminological Theory*, *the Encyclopedia of Street Crime*, *Multimedia Encyclopedia of Women in Today's World*, *the Encyclopedia of Crimes of the Century*, and *the Encyclopedia of Juvenile Delinquency*. She has conducted primary research in a variety of corrections' spaces (e.g., prisons, day reporting centers) and secondary research examining life course criminology and in corrections on the topic of work release centers. She has published several books including "Offender Reentry: Beyond Crime and Punishment" (2013, with Jacqueline B. Helfgott) for *Lynne Rienner Publishers*; "Women and Crime: Balancing the Scales" (2016, with Fran Bernat and Lynne Goodstein) for *Wiley-Blackwell Publishers*; "Community Corrections" (2017) for Carolina Academic Press; and "Women Leading Justice: Experiences and Insights" (2019 with Jacqueline B. Helfgott) for Routledge. She has served as co-principal investigator on several collaborative academic-practitioner research initiatives including an evaluation of *the Seattle Women's IF Reentry Project*. She also has served on the Seattle Work Release Advisory Board. She is also currently serving as Co-Editor (with Jacqueline B. Helfgott) of *Criminology*, *Criminal Justice, Law & Society*. She is a member of the *Academy of Criminal Justice Sciences*, the *American Society of Criminology*, and the *Western Society of Criminology*. She has served as graduate director of the criminal justice Master's program since 2008 (with the exception of 2010-2011, 2017-2018).



Dr. Matthew J. Hickman, Professor & Chair of the Department of Criminal Justice at Seattle University

In addition to conducting research in the general areas of police integrity and ethics, forensic evidence processing, and quantitative research methods, he teaches a variety of both undergraduate- and graduate-level courses including statistics, research methods, criminology, forensic science, ethics, and crime mapping. Prior to joining the faculty at Seattle University in 2007, he was employed as a statistician at the Bureau of Justice Statistics (BJS), the statistical research arm of the U.S. Department of Justice, for seven years. There, he specialized in the development and analysis of national data collections relating to law enforcement operations as well as forensic crime laboratories and medicolegal death investigation systems in the United States. Hickman's research has been published in numerous peer-reviewed journals including *Criminology*, *Criminology & Public Policy*, *Journal of Quantitative Criminology*, *Sociological Methods and Research*, *Crime & Delinquency*, *Police Quarterly*, and *Policing*. Books include *Policing for the 21st Century: Realizing the Vision of Police in a Free Society* (Kendall/Hunt, 2016), and edited volumes *Forensic Science and the Administration of Justice* (Sage, 2014) and *Police Integrity and Ethics* (Wadsworth/Thomson, 2004). He has written several book chapters for edited volumes including: *Race, Ethnicity and Policing*; *Rational Choice and Criminal Behavior*; and *Encyclopedia of Police Science*. Hickman is a past President of the *Western Society of Criminology* and he served as an Executive Counselor for the *American Society of Criminology* Division of Policing. He is a member of the *American Society of Criminology*, *Western Society of Criminology*, and the *International Association of Crime Analysts*.

Seattle University Crime & Justice Research Center – *Roots of Injustice: The Structural Sources of America's Penal State*, March 5, 2021 9:00-5:00pm



Roots of Injustice: The Structural Sources of America's Penal State

March 5, 2021, 9:00-5:00pm - Online Continuing Education via Zoom Videoconference



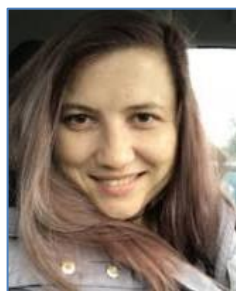
Jonathan Bechtol, Administrative Assistant, Seattle University Department of Criminal Justice

Jonathan is proud to be part of the Seattle University community. After three years living throughout the Bay Area, where he attended Community College and studied journalism, Jonathan returned to Washington State and lived close to his hometown, Redmond. He worked at Sports Authority and then for Costco Wholesale, before joining Seattle University. He hopes to complete his degree while working at Seattle University. Jonathan enjoys reading, Frisbee golf, and board games in his free time.



Nicole Moses, Graduate Program Coordinator, Seattle University Department of Criminal Justice

Nicole joined Seattle University Department of Criminal Justice from her home city of Phoenix, AZ where she worked at Arizona State University for 5 years and received her Bachelor's in Criminology & Criminal Justice. She moved to Seattle, WA in August 2017 to serve with AmeriCorps National and decided to stay in the area after her term. Nicole joined Seattle University in April 2019 and is very excited to be back in Higher Education. She has plans to pursue a graduate certificate in Higher Education Administration and then hopes to join a Master's program. In her down time, Nicole enjoys going on day trips, photography, reading, antiquing for vintage cameras, and thrifting.



Tatiana Patrasco, MACJ Candidate, Seattle University Department of Criminal Justice

Tatiana Patrasco is a student in the Master of Arts in Criminal Justice program at Seattle University. She is assisting with the event serving as a behind the scenes liaison between current Seattle University Department of Criminal Justice graduate students to relay their questions to the alumni panelists.