

SEATTLEU

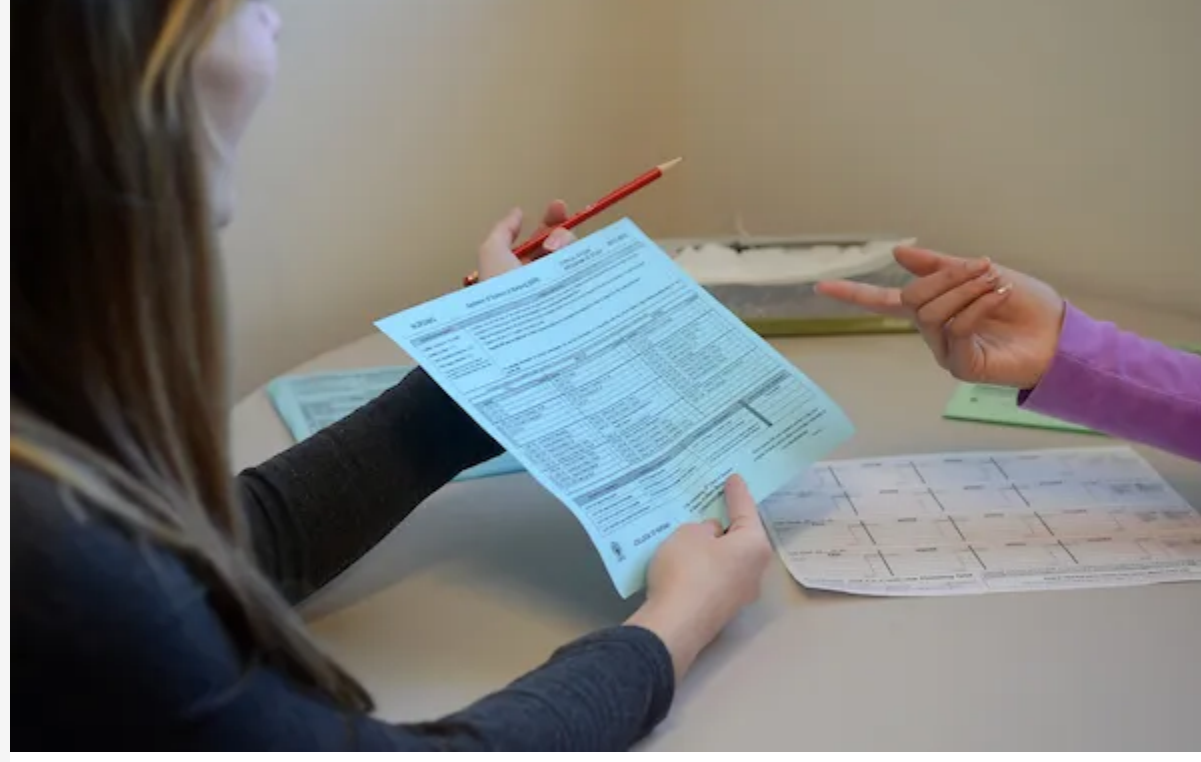
# Parent and Family Engagement

By Seattle University • Oct 21, 2023

"**Family Connections**" is our Seattle U family e-newsletter. We know how important parents and families are to our students' success. Our goal is to keep you updated on campus happenings and share information pertinent to parenting a college student.

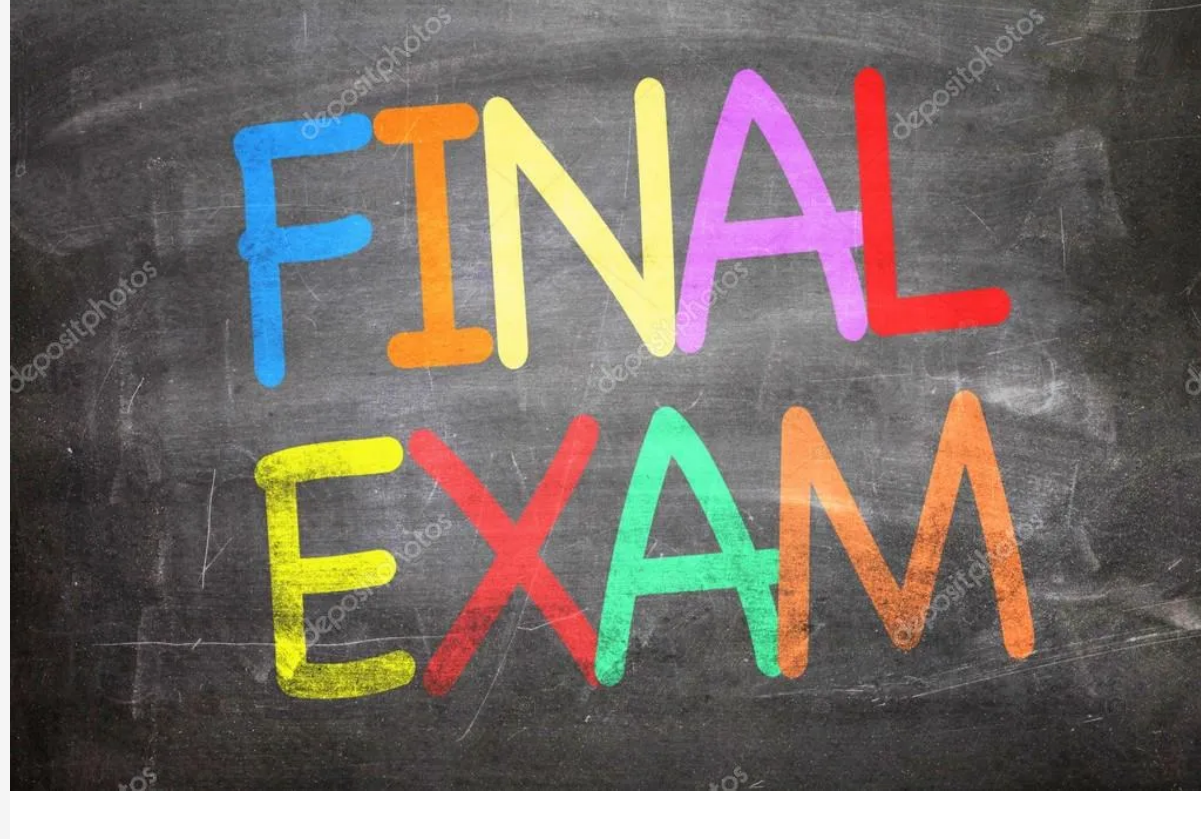


## Advising for Winter Quarter 2024



The Advising Period for Winter Quarter 2024 runs 10/23-11/13. First year students and new transfers are required to meet with their academic advisor during their first 3 terms. All students should connect with their advisor for more than just course registration planning. Information about our Advising Services is available [here](#).

## Fall Quarter Final Exam Schedule



Please make sure your student checks their [Fall Quarter final exam schedule](#) before making reservations to go home for the winter break.

## FAFSA Updates



FAFSA is changing. The priority filing date for Seattle U remains February 1 but the FAFSA form will not be available from the Department of Education until December 2023. See details [here](#).

## Facebook

Our original Seattle U Parents Facebook group administrator was hacked and deleted so we needed to create a new group. We can no longer approve membership or posts in the old group. If you are interested in being in the virtual community, please ask to join [Seattle University Families](#) and answer the 3 membership questions. We apologize for the inconvenience.

## October Questions to ask Your Redhawk:

- Do you know where to get help with tutoring, writing, math, etc. if you need it?
- Have you found a club or organization to join?

## Important links for you...

### THIRD PARTY ACCESS TO STUDENT FINANCIAL INFORMATION:

There are two types of suggested access that students may give to parents or supporters.

**Proxy Access** allows family/supporter to speak to SFS Office about account status, balance, award letter, and required documentation.

**Authorized User Access** allows family/supporter login access view billing and payment information, setup payment plans, see tax documents, and get email notifications about billing invoicing. [Check out our video](#) for step-by-step instructions for how a student can set up Proxy and Authorized User access for family or supporters.

### CAMPUS HAPPENINGS/IMPORTANT DATES

Keep track of important academic dates with the [Academic Calendar](#).

See club events and student activities on [ConnectSU](#).

Check out upcoming [Music, Theatre and Gallery Openings](#).

Show your SU Redhawk Spirit! Info on [Athletic Events](#).

**PARENT AND FAMILY FACEBOOK GROUP:** We invite you to join our [Seattle University Families](#) Facebook group. Be part of this virtual community just for SU parents and families! Share your experiences, ask questions and support one another. You are important members of the Redhawk family!

Do you have a topic you would like us to cover? Please let us know at [parents@seattleu.edu](mailto:parents@seattleu.edu).

[Click here to unsubscribe.](#)