

DEAR COMMUTER STUDENT,

Notes to commuter students from commuter students

“Commuting may be tiring, but there’s always a good thing that you can get out of it! Make sure you find out what time and what bus to use a day before your commute so you know what time to get ready and be excited for your day!”

“Don’t be afraid to reach out and confide in your Link community. I made many friends just by branching out to the people that used the same space as me. You’d be surprised to find out how many amazing people there are that study right next to you!”

“Keep up to date on social media pages. The Collegia Program has many reminders for events and social gatherings that can bring you closer to your community.”

“Commuting has made me more adventurous in a way. I learned how to navigate my way through the city and find new places that I can hang out at with my friends or even study.”

“Spend time in the Link and talk to the other students in your class about where they are coming from. You’ll be surprised how many students actually commute and then you can find ways to meet up during your travels.”



VISIT US

The Commuter Link

1103 Building, Room 105
Mon - Thurs: 9 am - 5 pm
Fri: 9 am - 4 pm



Visit The Commuter Link to check out a **locker** free of charge for a quarter or the full academic year.



Check out the **carpool board** in The Commuter Link to find a carpool.

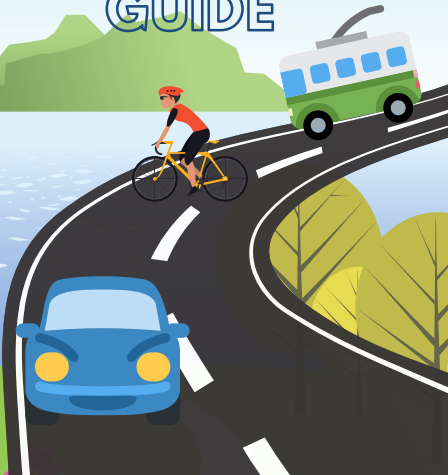
CONTACT US

(206) 296-2191
collegia@seattleu.edu

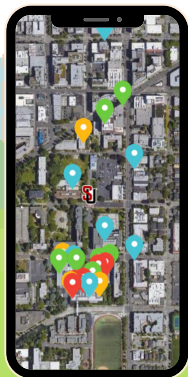
@sucollegia
tinyurl.com/commuterlink



COMMUTER RESOURCE GUIDE



For an **Interactive Campus Resource Map** visit:
tinyurl.com/sucrmap



To subscribe and receive emergency text messages from Public Safety:
Text **SeattleUAlert to 79516**

USEFUL APPS



Waze: Navigation & Live Traffic



Migo: Find & Book Your Ride



Mint: Personal Finance & Money



One Bus Away: Real-time Transit Information



Use **TapRide** to request a Night Hawk from Public Safety or call **206-398-4295**.



Sunday - Thursday:
6 pm to Midnight
Friday and Saturday: 6 pm to 2 am

Did you know?

You can request a Night Hawk to take you to the light rail station or a nearby bus stop!

STUDY SPOTS



Cherry Street Coffee House



Starbucks



Stumptown



Capitol Coffee Works



Café Pettiroso



Sémillon Bakery



Sweet Iron



RESOURCES



Central Customer Service Center (464 12th Ave.)

- Apply for a passport.
- Pay for Seattle City Lights and utilities.
- Pay for parking tickets.

Visit: tinyurl.com/centralcsc

ORCA

Visit King Street Center to buy monthly passes, permits, ORCA cards, and more!

King Street Center

201 S Jackson St.

Phone: (206) 553-3000

Visit: metro.KingCounty.gov

Tip: You can take the street car (First Hill) from Seattle U to get there!



BIKING



For a map of bike lanes and facilities:
tinyurl.com/sdotbikemap

PARKING



For maps about parking information in Capitol Hill:
tinyurl.com/spotangels
tinyurl.com/sdotmap



STUDENT DISCOUNTS

SOUTHPAW
WOOD ★ FIRED ★ PIZZA



Show your SU ID to get 10% off