

How Axiom looked last week

The screenshot shows the Axiom web application interface for Seattle University. The top navigation bar includes the Axiom logo and user information. The main content area features a navigation sidebar on the left with options like Home, Administration Pages, Recent Places, Reports, and About. The central dashboard displays the Seattle University logo and a welcome message for Nicholas. Key metrics include 'FY22 Budget Transfers' with a total of 1 and 'FY21 Budget Transfers and Budget Entries' with a total of 0. A central 'Announcements' section lists items such as '1/01 Processing schedule for budget transfers'. A 'Web Links' section includes links to the University Budget Office (UBO), Controller's Office, and Procurement Services. A 'Reports' section lists various budget-related reports.

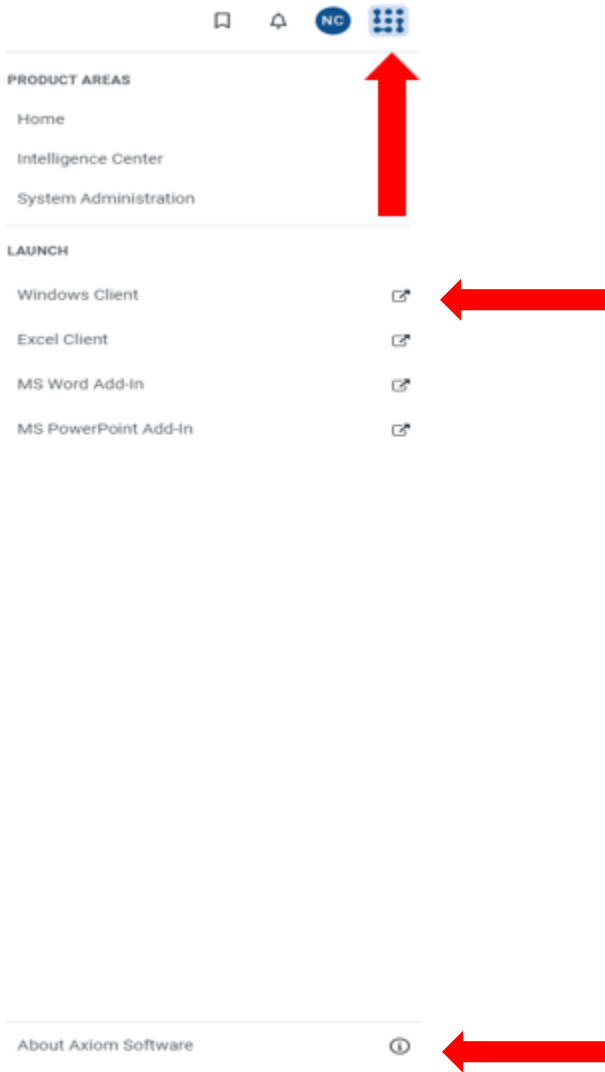
How Axiom looks now

The screenshot shows the updated Axiom web application interface for Seattle University. The top navigation bar now includes the Axiom logo and a menu with options like Home, Administration Pages, Recent Places, and Reports. The main content area features the Seattle University logo and a welcome message for Nicholas. Key metrics include 'FY23 Transfers' with a total of 11 and 'FY22 Budget Transfers and Budget Entries' with a total of 4. A central 'Announcements' section lists items such as '8/29 Axiom will be down for upgrade on September 14-19' and '6/30 Base Budget Transfers accepted through 10/14'. A 'Web Links' section includes links to the University Budget Office (UBO), Controller's Office, Procurement Services, MySU Portal, and Email UBO. A 'Reports' section lists various budget-related reports.

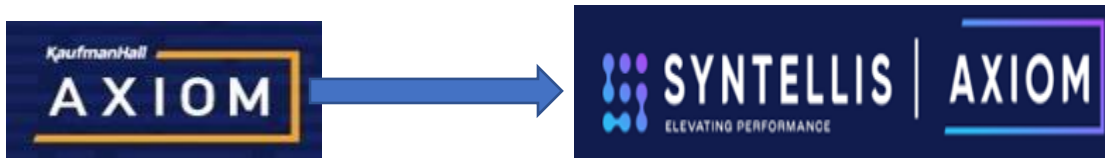
What has changed for me?

- Only the web client and only in a cosmetic way
- Most of the 'Navigation' section has moved from the left side of the screen to the top of the screen, except for the 'About' section, which now also contains the launch option for the Windows Client.

- To access the 'About' or 'Launch' sections, click on the Syntellis logo in the top right corner of your browser, as shown below:



- Axiom's provider, formerly known as Kauffman Hall, is now Syntellis Performance Solutions.



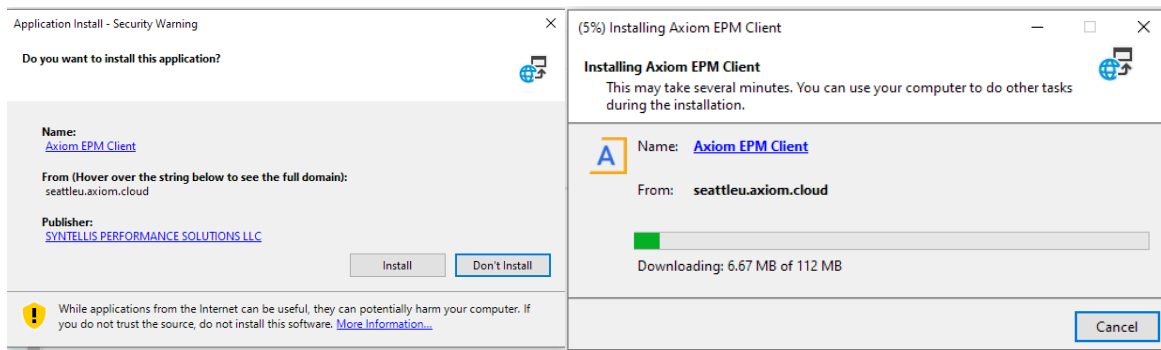
- Internet Explorer is no longer a supported browser, but Google Chrome and Microsoft Edge are fully supported.

What about the Windows Client?

- For campus users, there has been no change to the look or operation of the Windows Client.

Do I have to do anything?

- You can launch the Windows client from the homepage as you normally would, but there will be a brief installation of the Axiom client (112 MB file) that will take a minute or two to download.



- After the installation has completed, the Windows client should load as usual, and you can carry out your normal work in Axiom!

- If you've completed the installation and are prompted to log in again, you are likely using Chrome and may be missing a Chrome extension, as noted on the [Axiom installation guide](#) on the [UBO website](#). If you are still having issues, please contact the UBO.

After 3 years of updates, what else do you have for me?

- While the cosmetic changes are the first thing that you will likely notice, there have been appreciable back-end improvements that make the system more secure and faster to use. There is also additional functionality that we are now beginning to explore and test.

- The most exciting of these new features improve reporting capabilities, including report building via wizard, as well as ad-hoc reporting capabilities and integration with PowerBI. We will be investigating all these potential improvements over the next several months.

- Additionally, we have rewritten some queries that have cleaned up duplicate and/or old lines in labor plan files, in addition to filtering out old HR records when you enter employees into PCCs for your plan files. We believe that SCMA financial managers will find to determine the correct HR record to assign to a PCC.